



# Yankton Needs Assessment & Sports Complex Master Plan

October 16, 2013 – TOWN HALL MEETING



# Where we've been...

- Project kick-off
- Existing sport facility assessments
- Association interviews
- Data analysis
- Needs assessment draft report
  - Proposed facility upgrades
  - New facilities needed



# Data Analysis

- Aging area population
- School enrollment & sports participation decrease
  - Sports participation decreasing quicker
- Almost 50% of kids in Yankton area play sports
  - YYSA is largest association
  - Yankton Area Ice Assoc. & Yankton Girls Softball Assoc. are only associations growing



# Existing Facilities Assessment

- Evaluation of sports facilities only
- Poor or good condition rating
- Most facilities are in good condition



W. 21st St.

Kellen Gross Dr.

Summit St.

W. 19th St.





E. 21st St.

Douglas Ave.

W. 20th St.

Mulberry St.

E. 19th St.

Fantle Memorial Park | city of yankton, sd | existing conditions



Scale: 1" = 150'  
February 14, 2013



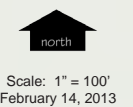


E. 2nd St.

Mulberry St.

Riverside Dr.

Missouri River









**NFAA Easton Yankton Archery Complex** | city of yankton, sd | existing conditions



# Proposed Facility Upgrades

- Input, enrollment, existing & evaluations
- Compliant with sanctioned field sizes
- Consolidate uses
- Short-term & future upgrades

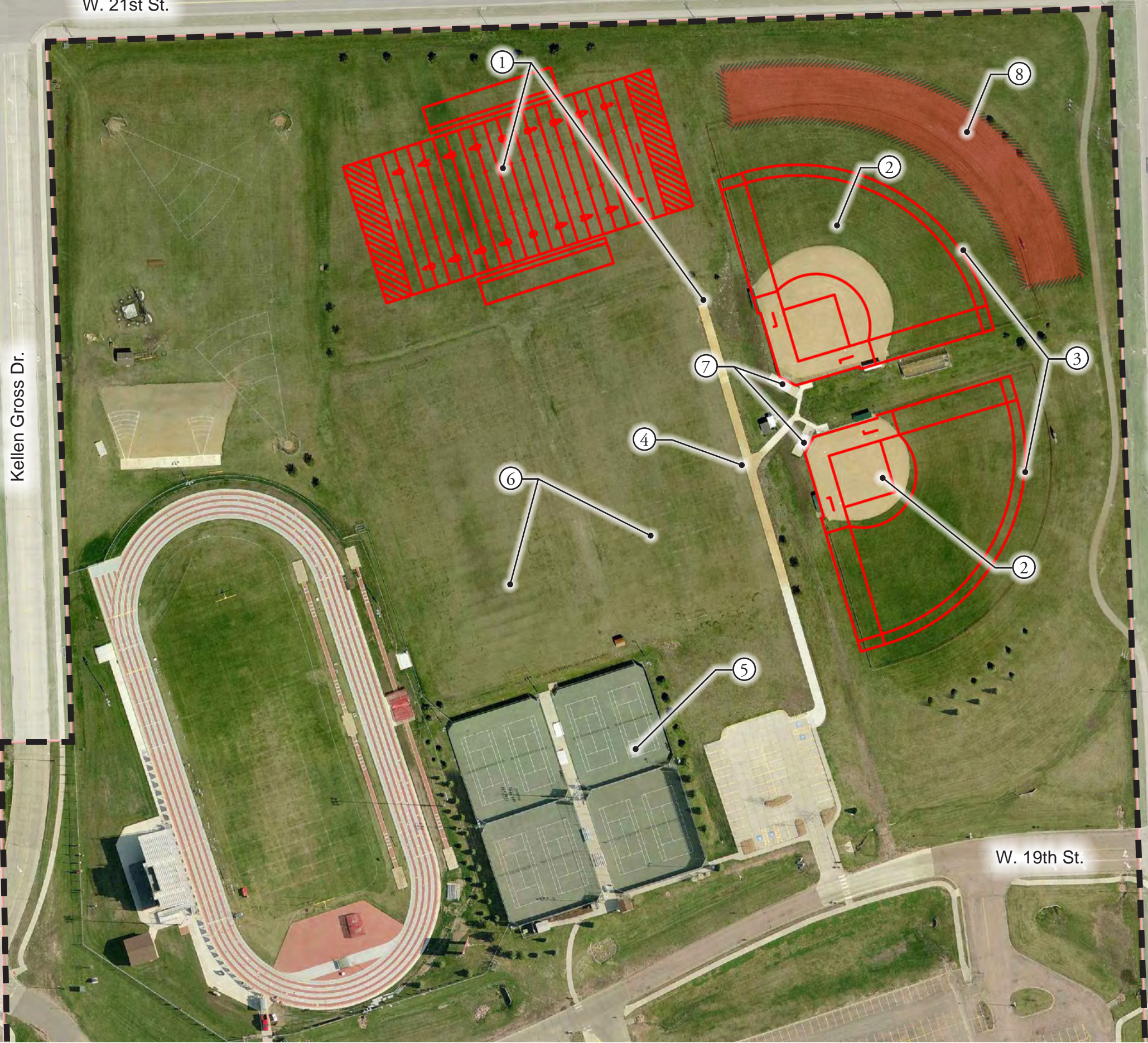


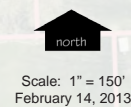
W. 21st St.

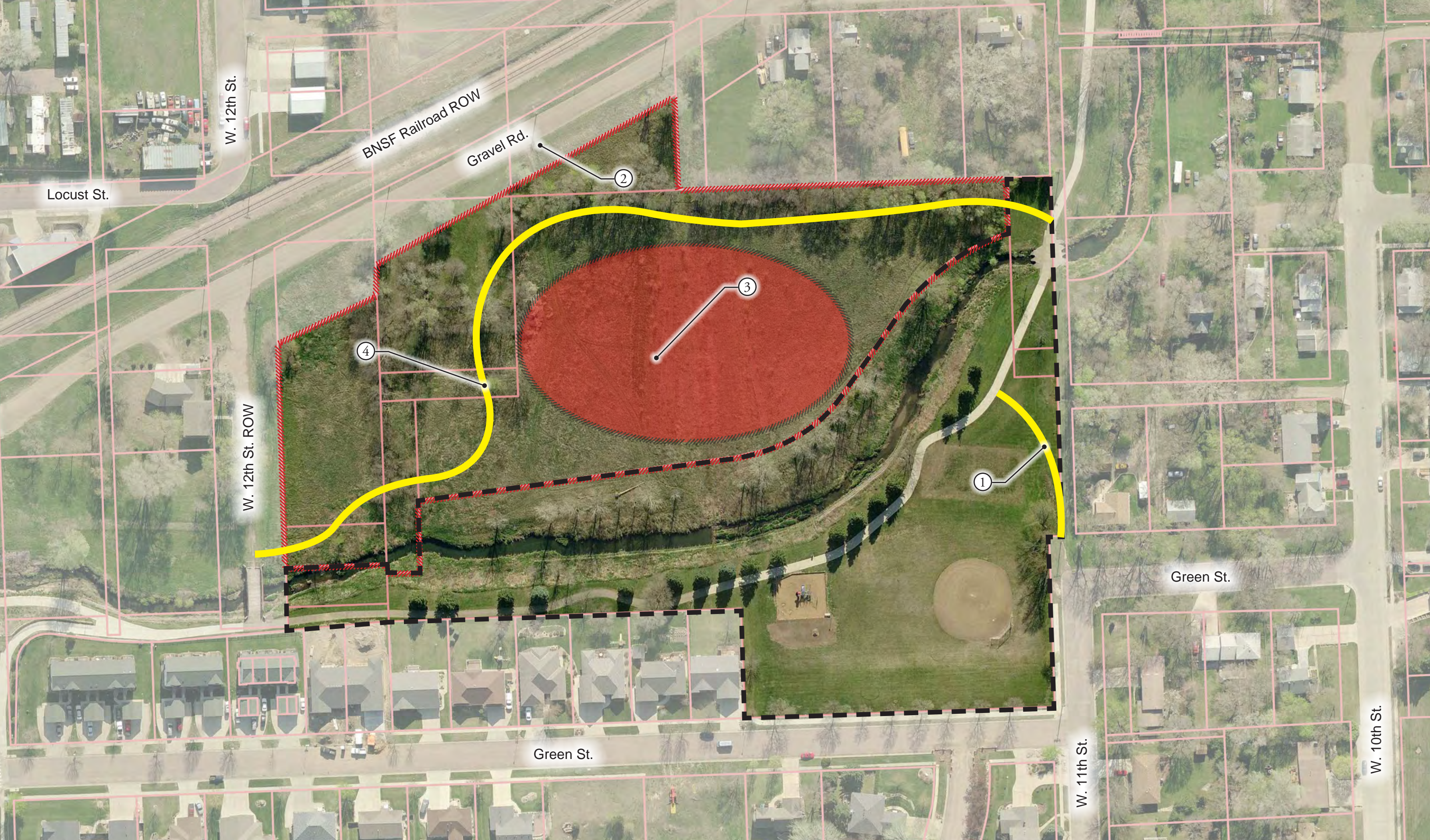
Kellen Gross Dr.

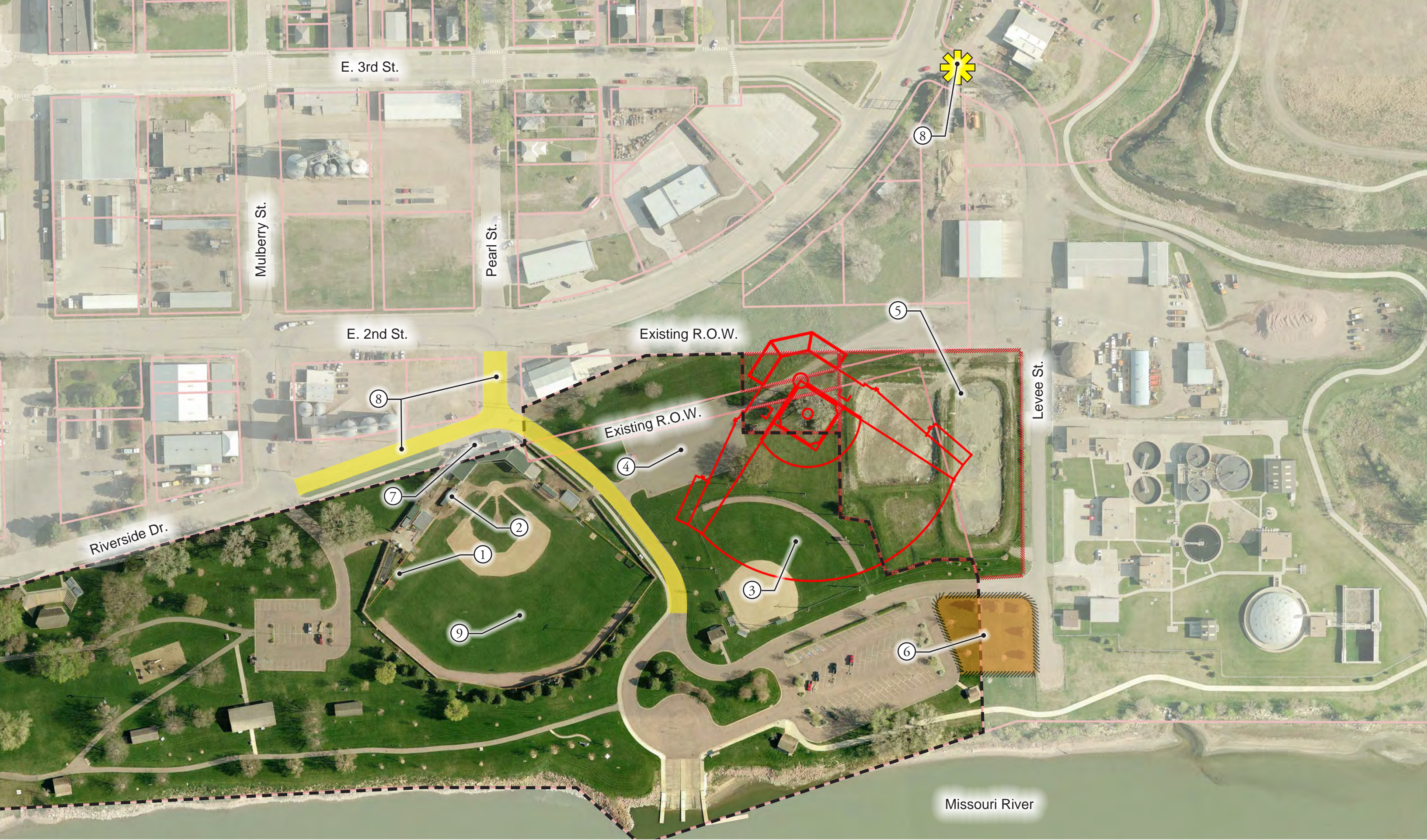
Summit St.

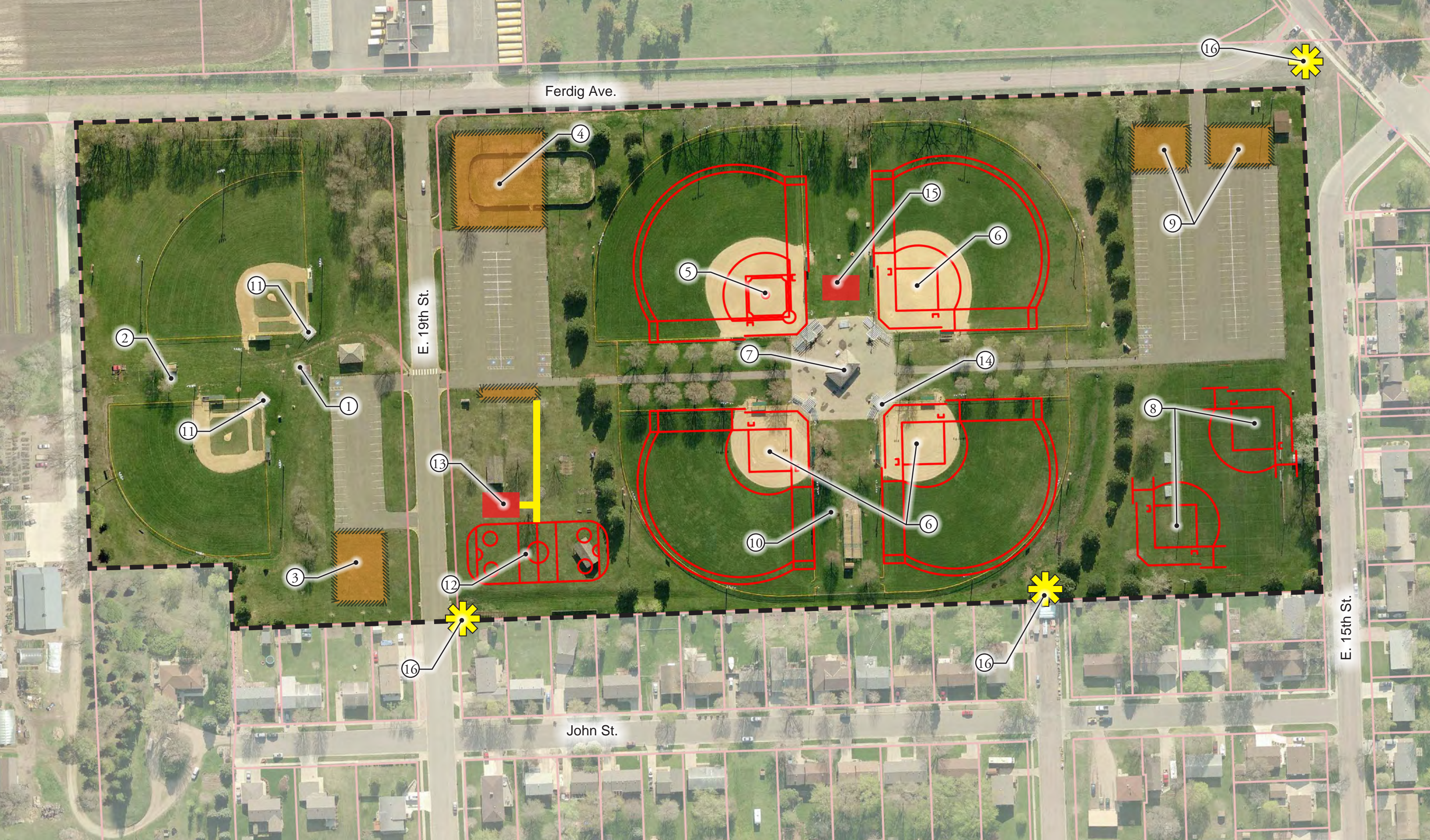
W. 19th St.













# New Facilities

- Yankton Youth Soccer Association
- Yankton Girls Softball Association
- Women's Softball Association
- Men's Softball Association
- Co-ed Softball Association



# Soccer Complex

- 18 total soccer fields
  - (5) – Full size
  - (3) – U12
  - (3) – U10
  - (3) – U8
  - (4) – U6
- Area needed: 58 – 60 acres
- Parking needed: 949 spaces
- Construction cost: \$4,290,000 - \$5,587,000



# Softball Complex

- 7 total softball fields
  - (3) – 300' outfield lines
  - (4) – 220' outfield lines
- Area needed: 40 – 42 acres
- Parking needed: 336 spaces
- Construction cost:  
\$5,971,000 - \$7,762,000



# Funding

Annual Debt Service at 3% for 20 Years

%

%

Amount Borrowed	(Multiplier)	Debt Serv.	Sales Tax Incr.	Property Tax Incr.
\$1,000,000		\$66,672.84	0.84%	2.83%
\$3,000,000	3	\$200,018.52	2.53%	8.48%
\$5,500,000	5.5	\$366,700.62	4.65%	15.55%
\$8,000,000	8	\$533,382.72	6.76%	22.62%
\$15,600,000	15.6	\$1,040,096.30	13.18%	44.12%
\$20,000,000	20	\$1,333,456.80	16.89%	56.56%
\$25,000,000	25	\$1,666,821.00	21.12%	70.70%
\$30,000,000	30	\$2,000,185.20	25.34%	84.84%

# Main Revenue Sources

	<b>General Sales Tax</b>	<b>Property Tax</b>	<b>Total</b>
Estimated 2014	\$4,621,000	\$2,357,558	\$6,978,558

	<b>BBB Tax</b>
2014 Estimate	\$545,700
2014 Expenses	\$354,046
	<u>\$191,654.00</u>

	<b>Second Penny Tax</b>
2014 Estimate	\$3,272,266
2017 Deficit	<b>-\$4,800,483</b>

	<b>BID Tax</b>
2014 Estimate	\$120,300
2014 Expenses	???

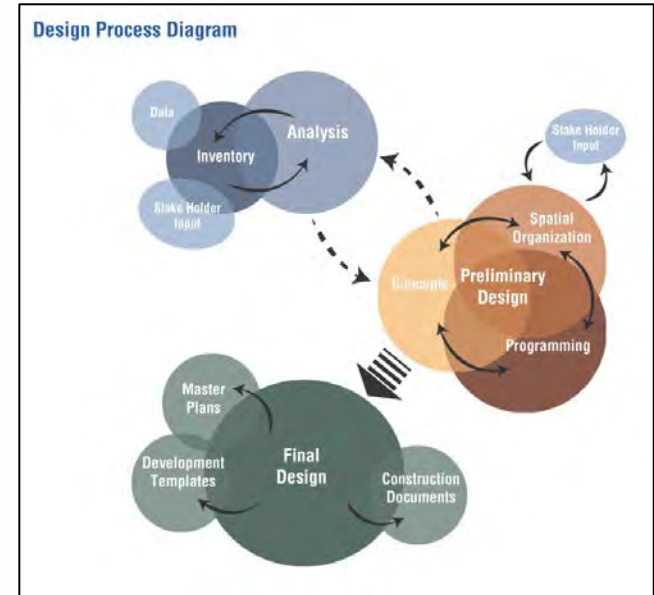
# General Fund Expenses

<b>Personnel</b>	<b>Operating</b>	<b>Capital</b>	<b>Transfers</b>	<b>Total</b>
\$5,902,692	\$3,092,555	\$1,252,299	\$2,653,002	\$12,900,548

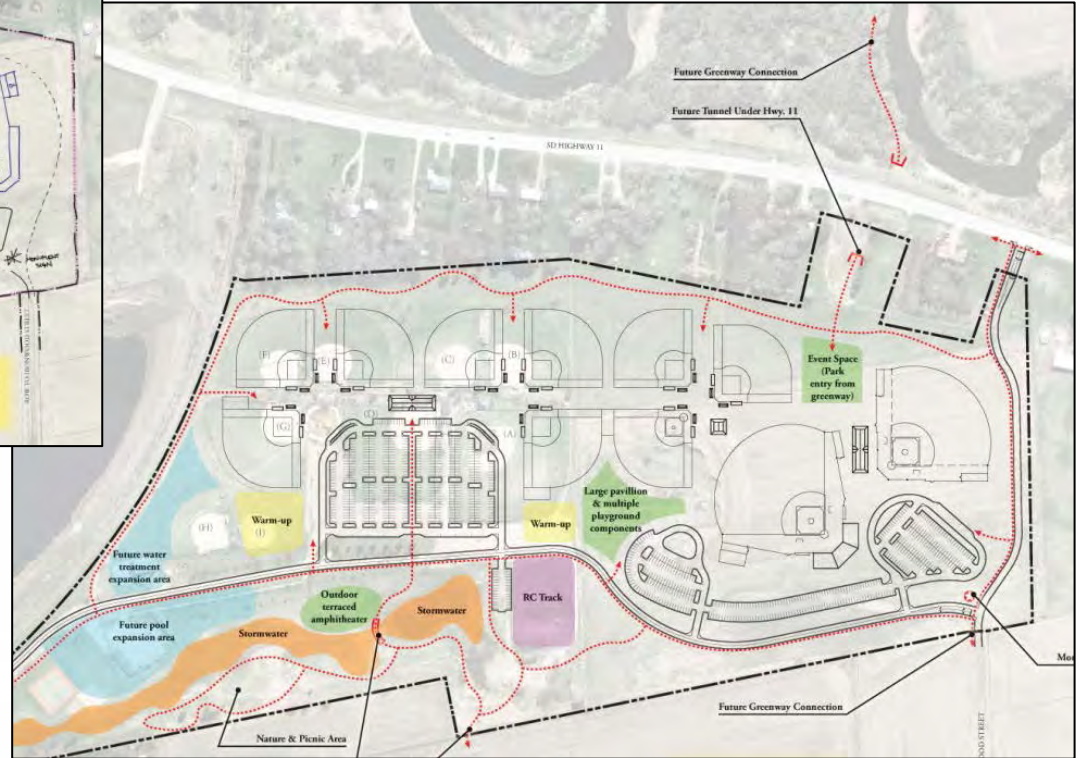
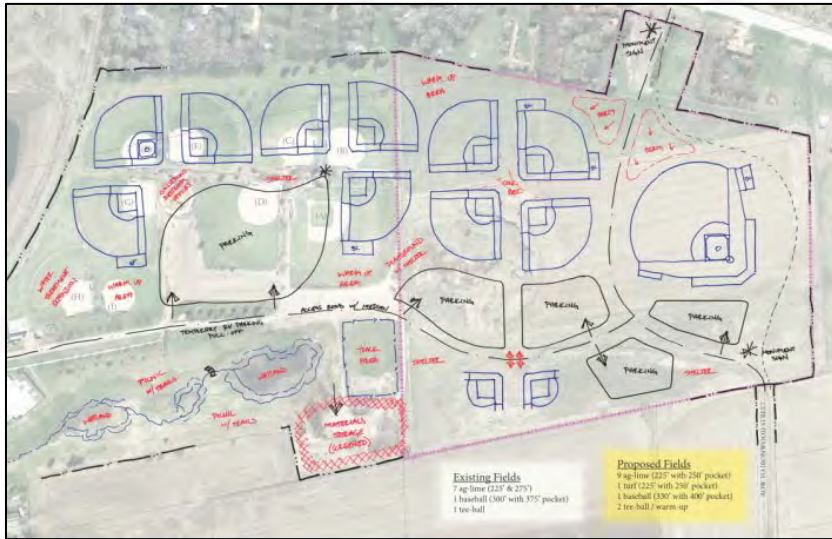
<b>Finance</b>	\$575,912
<b>Police</b>	\$2,803,228
<b>Fire</b>	\$675,792
<b>Streets</b>	\$1,627,084
<b>Library</b>	\$654,624
<b>Parks n Rec</b>	\$1,043,738

# Moving Forward...

- Town hall meeting (TODAY)
- **City determine location for new complex**
- Sports Complex **Concepts** (2)
- Present Concepts to Steering Committee
- **Public** meeting
- Develop **final** master plan & document
- Present Master Plan to Steering Committee & City Commission



# Q & A



**\*\*\*City needs to determine location for new sports complex**

- Purchase agreement

